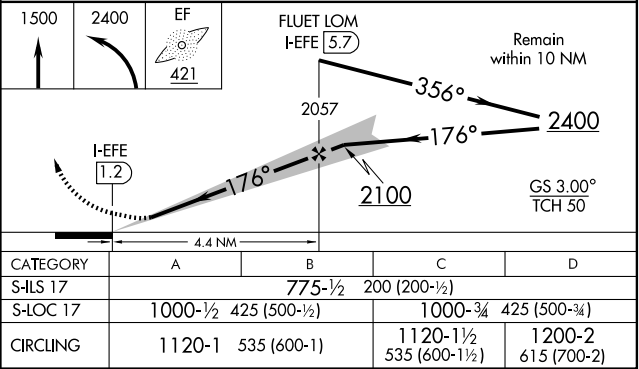
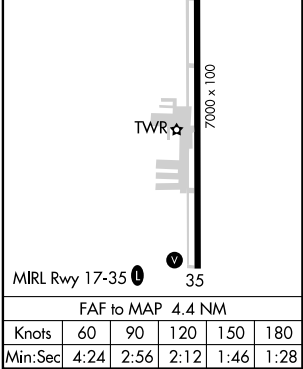
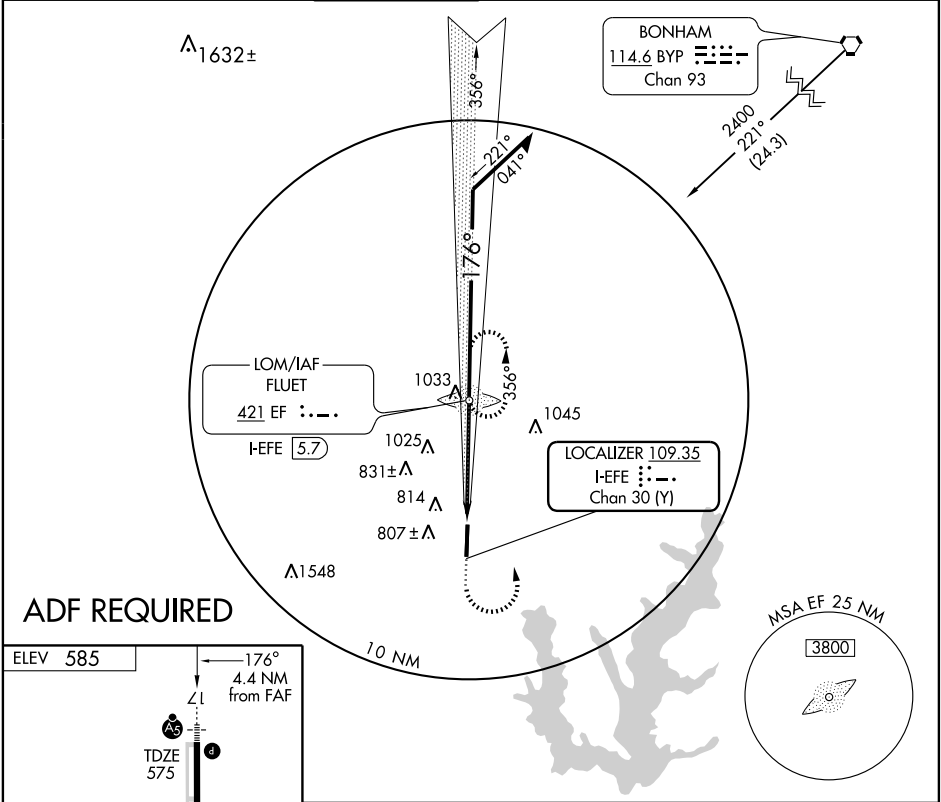


LOC I-EFE 109.35 Chan 30 (Y)	APP CRS 176°	Rwy Idg TDZE Apt Elev	7000 575 585
--	------------------------	-----------------------------	---

MC KINNEY/COLLIN COUNTY REGIONAL AT MC KINNEY (TKI) **ILS RWY 17**

A		MALSR 	MISSED APPROACH: Climb to 1500, then climbing left turn to 2400 direct FLUET LOM and hold.		
ASOS 119.925	REGIONAL APP CON 124.3 282.275	McKINNEY TOWER★ 118.825 (CTAF) 0	GND CON 121.875	CLNC DEL ★ 121.35	UNICOM 122.95



SC-2,17 MAR 2005

SC-2,17 MAR 2005